



Unpacking

Check to make sure all items listed below are included with your unit:

- N₂ Nitrogen Generator
- Main power connection cable
- Special mounting bolts and anchors (4 each) for mounting unit to a stone/concrete wall surface
- Operating Manual

NOTE: Contact your supplier if any items are missing.

Installation

CAUTION

The unit must be mounted in an upright position. Do not mount unit on its side or back.

WARNING

A minimum of two people are required to lift and secure unit to wall mounting surface.

CAUTION

Do not block the ventilation inlets and outlets, this could cause overheating and damage to the unit.

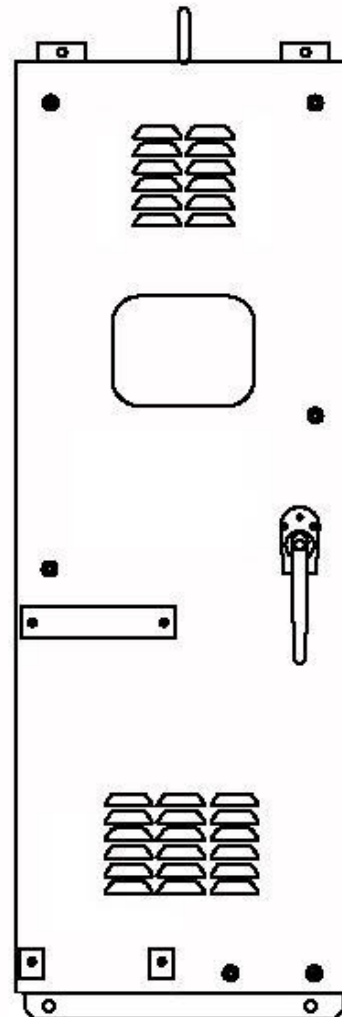
- The unit is not designed to be mounted such that the box sets on grade level (figure 1).
- Install unit away from heat sources.
- Do not install in an enclosed cabinet; proper ventilation is required.

1. Measure and mark the mounting hole locations in the wall surface.

IMPORTANT: Make sure bolt holes are level.

2. Drill the holes using a 13mm or 14mm masonry drill bit.
3. Install the bolt anchors (supplied).
4. Lift the unit into position and secure to the anchors with the bolts (supplied). Tighten the bolts securely.
5. Plumb to transformer using copper or stainless steel 1/4" tube.

Make sure bolt holes are level



Unit must be mounted above grade level

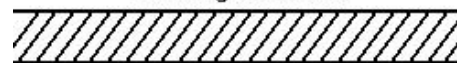


Figure 1. Mounting the unit



Electrical Connection



Warning
Electrical shock hazard. Failure to follow these instructions could result in serious injury or death.

- Electrical ground is required on this appliance.
- Do not use an extension cord with this appliance.
- The unit should be grounded according to local electrical codes to prevent the possibility of electrical shock. It requires a grounded receptacle with separate electrical lines, protected by fuses or circuit breaker of the proper rating.
- Check with a qualified electrician if you are in doubt as to whether the appliance is properly grounded.

1. Make sure the main switch is in the OFF position (Figure 2).
2. Connect the wiring to the terminals as shown in Figure 3.
3. Turn the main power switch to the ON position.
4. The LED display will read C 1 while the unit is warming up. This will take approximately 15 minutes.
5. When the display reads C 2 the unit is ready for operation. Refer to the *Operation Manual* supplied with the unit.

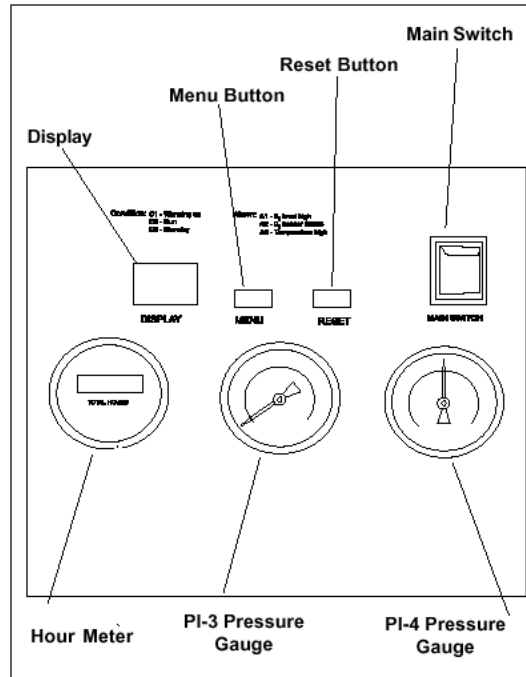


Figure 2. Control Panel

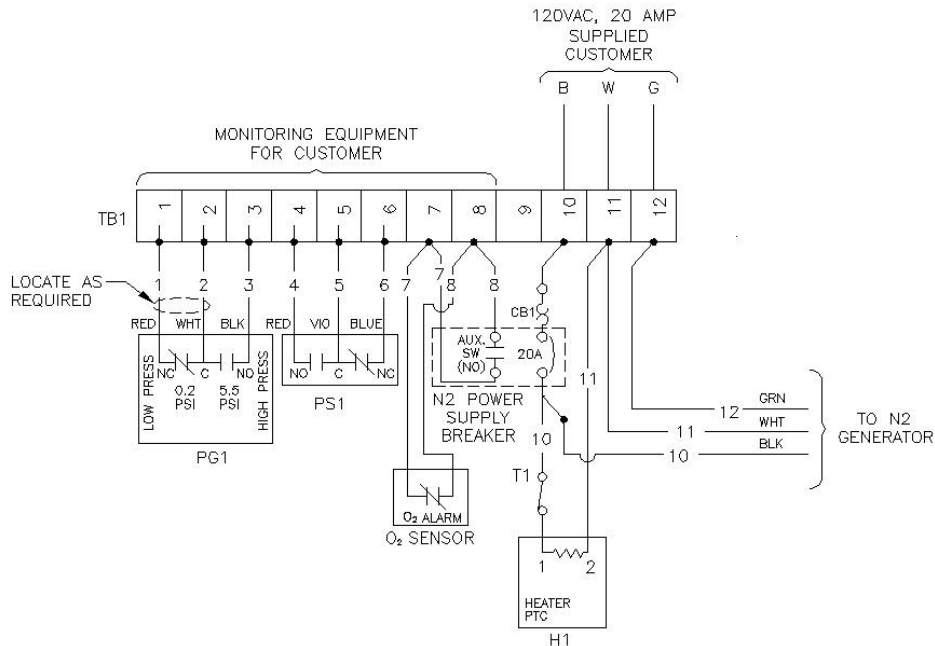


Figure 3. Electrical connection



Alarm Summary Table

Alarm	Contacts	Open	Close
Low Transformer Tank Pressure	1 - 2	Above 0.2 psig	<i>Below 0.2 psig</i>
High Transformer Tank Pressure	2 - 3	Below 5.5 psig	<i>Above 5.5 psig</i>
Low N2 Storage Tank Pressure	4 - 5	<i>Below Acceptable Minimum Operating Pressure</i>	At or Above Acceptable Minimum Operating Pressure
	5 - 6	At or Above Acceptable Minimum Operating Pressure	<i>Below Acceptable Minimum Operating Pressure</i>
Nitrogen Generator Trouble (O2 Alarm)	7 - 8	When Operation is Normal	<i>In Troubled State</i>
Nitrogen Generator Trouble (Aux. Sw)	7 - 8	When Breaker CB1 is Closed	<i>When Breaker CB1 is Open</i>

NOTE: *Bold Italics indicates alarm condition*
Regular font indicates normal condition